

Manufacturer's Specification Certification

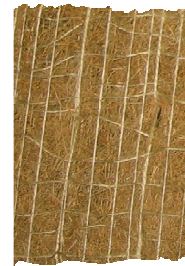
C4000BD Double Net Coconut Blanket


Contents:	100% coconut fiber
Netting:	Double jute, Leno weave Biodegradable
Thread:	Biodegradable
Roll Size:	100.0 sq yards/ 83.6 sq meters*
Width:	8.00 feet/ 2.44 meters*
Functional Longevity:	24 – 36 months
Best Use:	1:1 slopes, High-flow, roadways
	* Standard sizes. Additional or custom sizes may be available.

C4000BD is a fully Biodegradable blanket. The netting is made from Double jute, Leno weave. The thread is Biodegradable, while the filament of matrix is 100% coconut fiber.

Blankets can be produced from 50 SY to 1,000 SY and be from 4 ft. to 16 ft. wide.

As described in Federal Highway Administration's Standard Specification FP-03 in Section 713.17 and as described by ECTC as a Type 4.



Test Method Description	MARV*
Mass/Unit Area ASTM D 6475	10.5 oz/ sq yd
Tensile Strength –MD ASTM D 6818	125 lbs/ft*
Tensile Strength –TD ASTM D 6818	125 lbs/ft*
Thickness ASTM D 6525	0.25+ inches*
Light Penetration ASTM D 6567	14.2%
Water Absorption ASTM D 1117, ECTC TASC 00197	280%
Reported Fiber Length, 80 percent greater than	6 inches
Elongation –MD ASTM D 6818	15 lb/in
Elongation –TD ASTM D 6818	16.8 lb/in
Vegetated Shear Stress	10lb/ft ²
Vegetated Velocity	18ft/sec
Manning's "n" (0"-6")	0.035 *
Seedling Emergence	409%
C Factor	<0.25@1:1*
Permissible Shear Stress - ASTM D 7207	2.25 lbs/ft. *2*
Permissible rate of flow	10 ft/s*
*MARV-Expected Minimum Average Roll Value	
<p>Enviroscape ECM certifies that this product is designed to meet the above criteria and is manufactured to perform as described in the Federal Highway Administration's Standard Specification FP-03 in Section 713.17 and as described by ECTC as a Type 4.</p>	
 <hr/> Mark Deitering - Quality Manager	1/13/21 <hr/> Date