

Infiltrator Adapter Flange for use with EZsnap™, EZset™ and TW™-Risers on Concrete Tanks



Infiltrator's 24" Adapter Flange provides a watertight connection when using EZsnap, EZset or TW-Risers and Lid Systems on a concrete septic tank with up to a 24" manhole openings.

Adapter Flange Assembly Instructions

This document provides recommended procedures for the connection of the Infiltrator Adapter Flange to a concrete septic tank. These guidelines are applicable to any concrete tank with up to a 24" manhole.

The intent of this document is to provide procedures for making the connection between the Adapter Flange and the concrete tank in order to prepare it for an EZsnap, EZset or TW-Riser System installation. Once this connection has been made, Infiltrator's Riser Guidance Document should be used to complete the assembly of the riser system to the Adapter Flange.

State and/or local regulations supersede the guidelines in this document. If unsure of the requirements for a particular site, contact the local health department or permitting authority.

Material and Equipment Needed

- Concrete tank with up to a 24" manhole/s
- Infiltrator Adapter Flange
- (6) Tapcon 1/4" x 1 1/4" stainless steel hex head screws
- Stainless washer 1" x 3/8"
- 3/16" concrete drill bit
- Screw Gun
- ISI-1500 Adhesive Sealant or equivalent
- Caulk Gun
- Utility Knife

General Guidelines

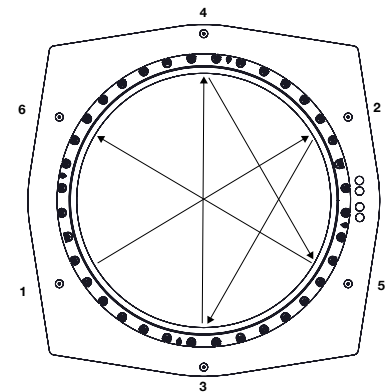
1. Complete riser installation, including the installation of Adapter Flange, and lid prior to backfilling.
2. Ensure that all connection surfaces are clean and dry.
3. Sealant shall be ISI-1500, mastic or equivalent.
4. Sealants vary between manufacturers. Sealant identified herein represents a minimum recommendation. The installer must use discretion in determining the size and amount of sealant needed to craft and maintain a watertight seal.
5. Keep sealant at a temperature (at least 60° F/16° C) that maintains its workability. Keep it free from dirt and debris that may compromise a watertight seal.
6. When applying sealant to the flange, ensure continuous application to avoid gaps that may cause leaks. Apply an adequate quantity to ensure a sealed connection. Allow a minimum sealant cure time of 24 hours before testing or placing into service.
7. Physically spread the sealant onto the Adapter Flange to ensure that it distributes properly during assembly.

8. Do not over tighten screws. This may damage the plastic parts being connected, causing the screw connection to fail. This may also strip the screw head. Be sure to insert screws in a "star" pattern, tightening opposite sides of the riser or Adapter Flange.

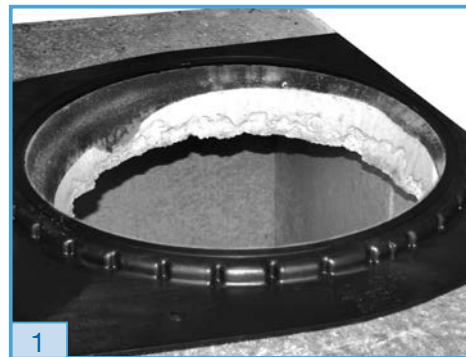
Note: Use (6) 1/4" x 1 1/4" tapcon stainless steel screws with 1 x 3/8" stainless washers.

9. In addition to the measures shown in this document, additional sealant may also be applied to the exterior joint connection to help establish and maintain watertight connections.

Tightening in a "Star" Pattern



Installing the Adapter Flange to a Concrete Septic Tank



1. Position the Adapter Flange in place centered over manhole.

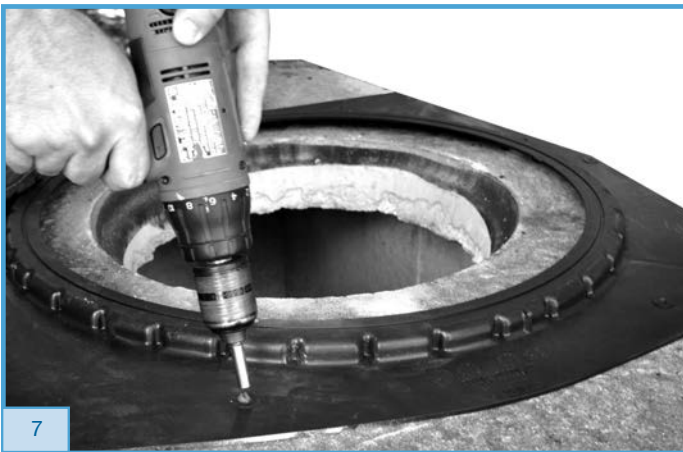


2. Mark six evenly spaced drill hole locations on Adapter Flange.

3. Drill 3/16" diameter holes in 6 marked locations at a 1 1/4" depth.
4. Clean drilled holes and sealing surface to remove debris and dirt.
5. Inspect both sides of the Adapter Flange to ensure surface is clean and dry.
6. Apply ISI-1500 Adhesive Sealant in a continuous bead on the bottom surface of Infiltrator Adapter Flange. Sealant thickness must fill the space between Adapter Flange and surface of tank.



7. Fasten Adapter Flange to tank using (6) 1/4" x 1 1/4" (5.0 mm x 50 mm) stainless steel hex head tapcon screws with 1" x 3/8" stainless steel washers. Tighten in star pattern.



8. Install the EZsnap, EZset or TW-Risers and lids according to Infiltrator's Riser Guidance document.



Note: Infiltrator Adapter Flange has been modified to accept EZsnap risers in addition to the EZset and TW-Risers. Once the Adapter Flange has been installed, the EZsnap riser can be snapped and screwed into the flange opening.



**DRAINAGE
SOLUTIONS, INC**

(317) 346-4110

www.drainagesolutionsinc.com



4 Business Park Road • P.O. Box 768 • Old Saybrook, CT 06475 • 860-577-7000 • FAX 860-577-7001
1-800-221-4436 • www.infiltratorwater.com