

# J·DRAIN MVP



**DRAINAGE SOLUTIONS, INC**

(317) 346-4110

www.drainagesolutionsinc.com

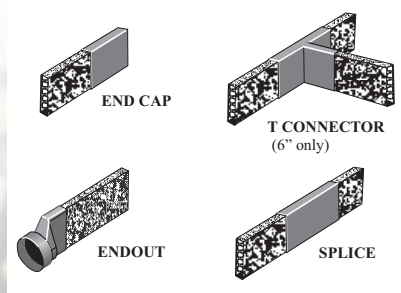
**Maximum Velocity & Performance**

**APPLICATIONS**

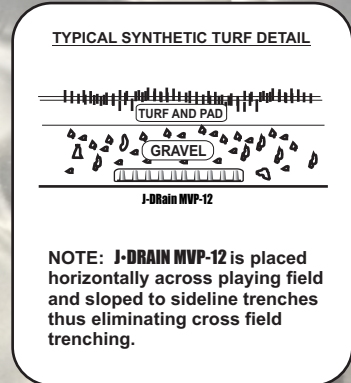
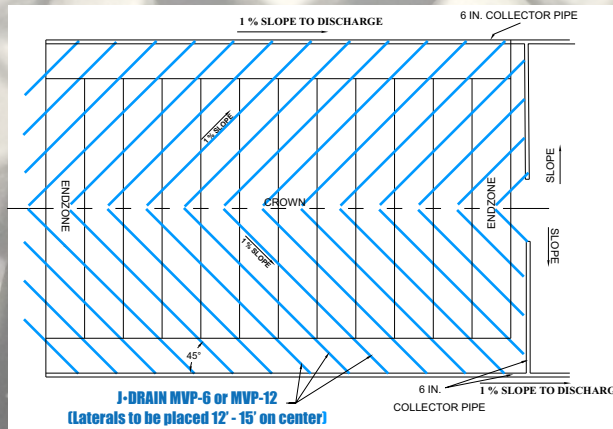
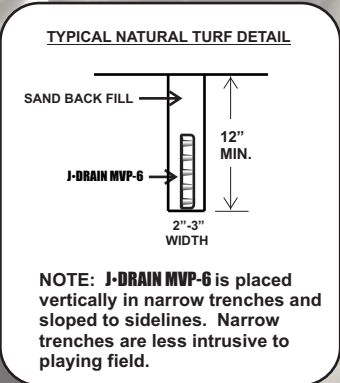
ATHLETIC FIELDS

GOLF COURSES

LANDSCAPE



**J-DRAIN MVP** is a 3-dimensional, high-flow, polyethylene/polypropylene blend drainage core which is wrapped with a heavy duty non-woven filter fabric. It is designed to retain soil particles while allowing water to pass through the drain core for easy removal of water. **J-DRAIN-6** is placed vertically in narrow, less intrusive trenches and sloped to collection drains in natural turf applications. **J-DRAIN-12** is placed horizontally across the field toward the sideline trench in synthetic turf applications.



## PHYSICAL PROPERTIES

**Core**

Compressive Strength (ASTMD-1621)	12,500 psf	(598 kN/m <sup>2</sup> )
Thickness (ASTM-1777)	1 In.	(2.54 cm.)
In-Plane Flow (ASTMD-4716)	30 gpm/ft width	(372 lpm/m)
(Q&518 psf & Hydraulic gradient = .1)		

**Fabric**

Flow (ASTM D-4491)	135 gpm/ft <sup>2</sup>	(5500 lpm/m <sup>2</sup> )
CBR Puncture (ASTM D-6241)	310 lbs.	(1.38 kN)
AOS (ASTM D-4751)	70 U.S. Sieve	(.212 mm)
Grab Tensile (ASTM D-4632)	120 lbs.	(.534 kN)
Permittivity (ASTM D-4491)	1.7 sec <sup>-1</sup>	
U.V. Resistance (ASTM D-4355)	70% @500 hrs.	

**Roll**

Roll Weight:	38, 68, 83, 98, & 128 lbs.	(17, 30, 37, 44, & 57 kgs.)
Roll Width:	6", 12", 18", 24", & 36"	(15, 30, 38, 45, & 60 cm.)
Roll Length:	165 ft. / 300 ft.	(50.29 / 91.44 meters)

The information contained herein is believed by JDR Enterprises, Inc. to be accurate and is offered solely for the customer's consideration, investigation and verification. Determination of suitability for use is the responsibility of the user. JDR's Limitations, Limited Warranty, & Disclaimer along with Standard Terms & Conditions apply. See www.j-drain.com for more info. **Limitations:** J-DRain is resistant to chemicals in normal soil environments. However, some reagents may affect the performance of J-DRain. A JDR representative should be contacted for further information to determine the suitability of use of J-DRain in unusual soil environments. J-DRain should be limited to its exposure to ultra-violet sunlight. J-DRain should be backfilled or covered within seven days of installation. **Disclaimer:** All information, drawings and specifications are based on the latest published information at the time of printing. JDR reserves the right to make changes due to manufacturing improvements and engineering at any time. All physical properties are minimum average roll values (MARV). Standard variations of 10% in mechanical properties and 15% in hydraulic properties are normal.

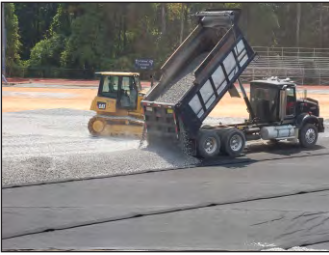
info@j-drain.com

www.j-drain.com

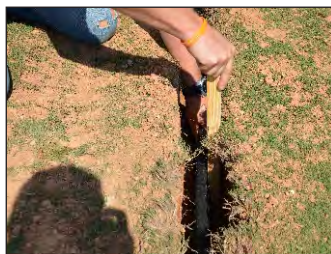
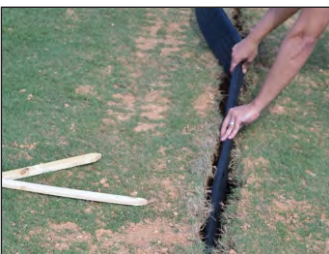
**JDR Enterprises, Inc.**

292 S. Main St., Suite 200 Alpharetta, GA 30009  
(800) 843-7569 (770) 442-1461

## Synthetic Turf Applications



## Natural Turf Applications



[info@j-drain.com](mailto:info@j-drain.com)

[www.j-drain.com](http://www.j-drain.com)

**JDR** Enterprises, Inc.

292 S. Main St., Suite 200 Alpharetta, GA 30009  
(800) 843-7569 (770) 442-1461