



**DRAINAGE
SOLUTIONS, INC**

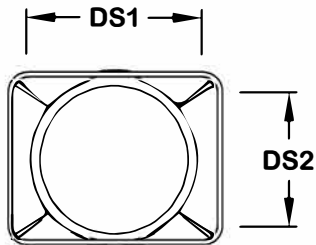
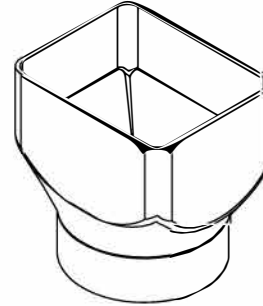
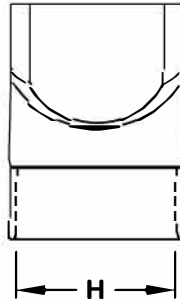
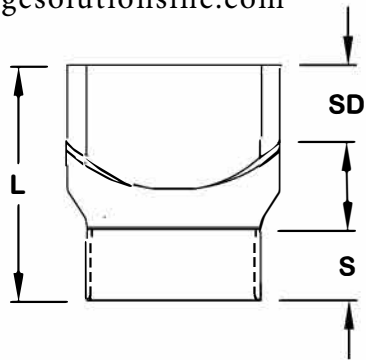


Macon Plastics

(317) 346-4110

www.drainagesolutionsinc.com

** This drawing was originated by and is the exclusive property of Macon Plastics. It is furnished for recipient's information only and is not an authorization or license to make this construction or furnish this information to others.



Nominal Size	Part Number	S	SD	L	H	DS1	DS2
2x3x4	80564	1.7	2.0	4.1	4.5	3.0	2.0
3x4x4	80554	1.7	2.0	4.1	4.5	4.0	3.0
3½x5½x4	80572	2.0	2.0	7.0	4.5	5.5	3.5
4x5x4	80551	2.0	1.8	7.0	4.5	5.0	4.0
4x6x4	80562	2.0	2.2	7.2	4.5	6.0	4.0
3x4x6	80556	3.0	2.0	7.0	6.6	4.0	3.0
4x6x6	80552	3.0	2.2	7.8	6.6	6.0	4.0
5x6x6	80571	3.0	2.5	7.9	6.6	6.0	5.0
5x7x6	80579	3.0	2.8	8.8	6.6	7.0	5.0
6x8x6	80575	3.0	3.0	9.5	6.6	8.0	6.0
6x8x8	80563	4.0	3.0	10.5	8.6	8.0	6.0

Description: Rectangle Downspout Adapter

Material: IPS SCH 40

Size: (per chart)

Configuration: Downspout x Hub

* Dimensions are approximate due to various factors affecting production. Dimensions are subject to change without notice due to design or production modifications. Unless otherwise specified, socket bottom to socket bottom dimensions are to be +/-1/2". Overall length dimensions are to be +/-1". All fitting angles are to be +/-1 degree. Outside dimensions are to be +/-1/4".