

12" ROUND GRATE



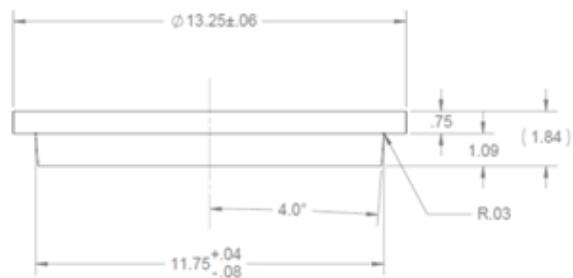
(317)346-4110

DRAINAGE SOLUTIONS, INC www.drainagesolutionsinc.com



WEIGHT per EACH:

16 LBS



Load Recommendation Guide



Class D

- Loads of 326-575 psi.
- Recommended for heavy-duty hard tire forklifts at speeds less than 20 m.p.h., H-20 rated.

Material: Ductile Iron
Colors: Black (D12)
Fits: 12" Corrugated and Sewer and Drain pipe
Opening: 55.16 in² open space
Will accommodate 168.74 gallons per minute with 1/2" of head

