

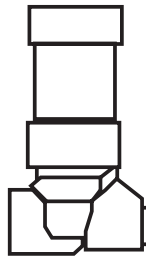


A CSW Industrials Company

INSTALLATION INSTRUCTIONS

RectorSeal brand solvent cements are approved to meet manufacturer's recommendations.

DRAINAGE SOLUTIONS, INC



CLEAN CHECK®

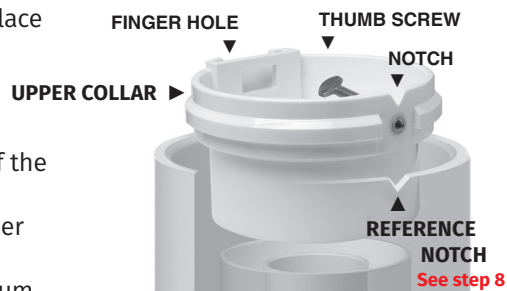
Extendable Backwater Valve

ADAPTER & PLUG
(available on 4" model only)



Pre-Installation

- Slide Upper Collar through Outer Riser Pipe. If collar does not slide freely through pipe, check to see if pipe is "out-of-round". If so, replace Outer Riser Pipe.
- Backwater valves require adequate drop between the flood rim of the lowest fixture and burial depth of the valve in order to function properly. We recommend a minimum slope of 1/4" per foot or as recommended by the UPC and IPC codes.
- 6" Clean Check includes PVC bushings for use if needed. Discard if not used.



OUTER RISER PIPE
not included

INNER RISER PIPE
not included

Compatible Parts (not included)

3" and 4" Clean-Check Valves

Outer Riser Pipe
Standard 6" SCH40 ABS or PVC
of required length

Inner Riser Pipe
Standard 2" or 4" ABS or PVC
of required length

Adapter & Threaded Plug
Standard 6" ABS or PVC

6" Clean-Check Valves

Outer Riser Pipe
Standard 8" SCH40 or SDR35 ABS or
PVC of required length

Inner Riser Pipe
Standard 4" ABS or PVC
of required length

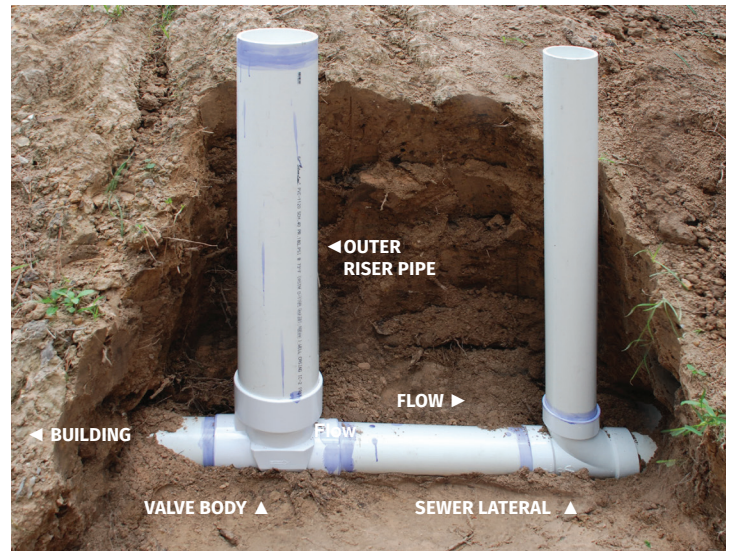
Adapter & Threaded Plug
Standard 8" ABS or PVC

LOWER COLLAR & FLAPPER

Flow from building

VALVE BODY

To sewer



Outer Riser Installation

- 1 At proper depth, install the Clean Check Valve Body between the building and the sewer lateral, with the "FLOW" arrow of the Valve Body pointing downstream away from the building.
- 2 Rotate the Valve Body until the opening is facing directly upward. A level may be used across the top of the Valve Body to verify horizontal positioning.
- 3 Cut the Outer Riser Pipe to the required length. Cement and insert while keeping the inside of the body clean of debris. **CAUTION:** Be certain that excess solvent cement has not impeded proper seating of the Flapper Assembly or the proper seating of the flapper sealing surface of the Valve Body.

Inner Riser Installation

- 4 Cut the Inner Riser Pipe to a length 3 1/2" shorter than the Outer Riser Pipe.
- 5 Cement the Lower Collar with Flapper to one end of the Inner Riser Pipe.
- 6 Cement the Upper Collar to the other end of the Inner Riser Pipe, while aligning the center of the Finger Hole with the center of the Flapper on the opposite end.
- 7 When cement is dry, loosen the thumb screw in the Upper Collar and slide the Inner Riser Assembly – Flapper Assembly first – into the Outer Riser Assembly with the flat sealing side of the Flapper facing the inlet side of the Valve Body. Lower the Inner Riser Assembly into the seating area of the Valve Body, making certain that the Thumb Screw is inside the inside wall of the Outer Riser Pipe and NOT on the resting on the top edge. Seat the Flapper Assembly by rotating as necessary until it locks in place. Visually inspect that the Flapper Assembly is installed correctly.
- 8 **IMPORTANT:** Prior to installation of the Threaded Adapter & Plug (with the Inner Riser Assembly properly installed) cut a reference notch into the Outer Riser Pipe. This saw cut notch should be aligned with the molded Notch in the Upper Collar. For future removal, alignment of the notches will quickly indicate that the flapper is seated correctly.
- 9 **IMPORTANT:** Tighten the stainless steel Thumb Screw in the Upper Collar until it is firmly secured to the Outer Riser Pipe, fixing the Inner Riser Assembly in place.
- 10 Cement the Threaded Adapter to the Outer Riser and install the clean-out plug to complete installation.

