



PIPE TOOLS & VISES  
SINCE 1896

# Bevel Boss® Cordless Pipe Beveler Instructions

## CPBDK, CPBDBT, CPBDKE, CPBDADP, CPBMADP, CPBMADP29, CPBBADP

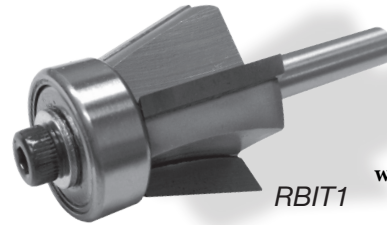
Adapting to DeWalt®, Milwaukee® and Bosch® Die Grinders

### READ BEFORE USE:



1. Check the bevel length/setting of the router bit.
2. Start the grinder **BEFORE** touching the router bit to the pipe. It needs to be at full RPM before you touch the pipe.
3. New users should make a practice bevel or two before working on the jobsite pipe.

Applies To: 04658, 04659, 04666, 04648, 04649, 04671, 04646



RBIT1



**DRAINAGE SOLUTIONS, INC**

(317) 346-4110


www.drainagesolutionsinc.com

REED Bevel Boss® Cordless Pipe Bevelers (CPB) are designed for use with a cordless die grinder to bevel the outside diameter and/or inside diameter of plastic pipe. REED Bevel Boss® Beveler Adapters Heads fit **ONLY** DeWalt®, Milwaukee® or Bosch® cordless die grinders – match the Adapter Head to the right die grinder. Assembly instructions are provided in this document.

REED CPBDK kit is complete with beveler attachment with exterior shroud, Router Bit RBIT1, die grinder, DeWalt® battery and charger in a storage case. The CPBDBT base tool with beveler attachment and die grinder requires a router bit and DeWalt® battery. Refer to these instructions for assembly of bit into beveler. Many users already own the battery and are able to use it on this REED tool.

*NOTE: Internal shroud CPBIDS #94644 must used for beveling the inside diameters and is available as an accessory.*

### PERSONAL SAFETY

1. **Stay alert**, watch what you are doing and use common sense when operating a power tool. Do not use tool while tired or under the influence of drugs, alcohol, or medication. A moment of inattention while operating power tools may result in serious personal injury.
2. **Dress properly**. Do not wear loose clothing or jewelry. Contain long hair. Keep your hair, clothing and gloves away from moving parts. Loose clothes, jewelry, or long hair can be caught in moving parts.
3. **Always wear eye protection.** 

### OPERATING INSTRUCTIONS:

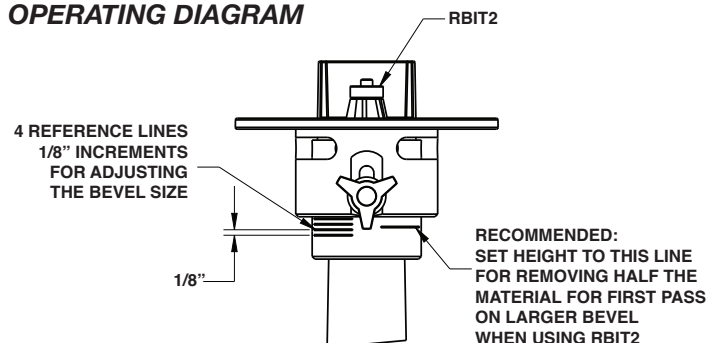
This tool is to be used on plastic pipe only. To adjust depth of chamfer, loosen the adjusting knob and slide the guide plate up or down until the required amount of the router bit is exposed above the guide plate and tighten the adjusting knob. To the left side of the Adjusting Knob there are four engraved lines on Adapter with 1/8" increments. When using the RBIT1 bit with the Adjusting Ring all the way to the bottom, the beveler will cut a 5/8" long bevel. By lining up the bottom of the Adjusting Ring with the engraved line, the length of the bevel is reduced by 1/8" for each line.

If the grinder is capable of multiple speeds, set the grinder to the fastest setting. Turn on grinder and place guide plate flat against the end of pipe. Slowly bring the router bit against edge of pipe until the bearing at the end of the bit is contacting the pipe. Slowly rotate the beveler **counterclockwise for an OD bevel** and **clockwise for an ID bevel**, being sure to keep the bearing in contact with pipe. A second quick pass around the pipe may be needed if the bevel is not smooth. An uneven bevel can happen if the guide plate is not kept perpendicular to the pipe and the bearing on the router bit is not kept against the pipe.

### OPERATING INSTRUCTIONS RBIT2 (1" BIT) ONLY:

The RBIT2 (1" bit) removes a large amount of material. Therefore, it is **STRONGLY RECOMMENDED** when cutting a 3/4" to 1" depth bevel to make two passes around the pipe, removing half of the material with each pass. For the first pass set the Adjusting Ring so it lines up with the engraved line to the right of the Adjusting Screw and make the first pass around the pipe. To complete the bevel, readjust the Adjusting Ring to remove the remainder of the material.

### OPERATING DIAGRAM



**CPBDADP fits DeWalt® model DCG426B 20V MAX XR Lithium-Ion Cordless Brushless Variable Speed Die Grinder**

**CPBMADP fits Milwaukee® models 2784-20 and 2784-22 M18 FUEL™ 18V Lithium-Ion Brushless Die Grinder**

**CPBMADP29 fits Milwaukee® models 2939-20 and 2984-20 M18 FUEL™ Die Grinders**

DeWalt® and Milwaukee® are registered trademarks that are not associated with Reed Mfg.



### REED MANUFACTURING

1425 West 8th Street Erie, PA 16502 USA Phone: 800-666-3691 or +1 814-452-3691

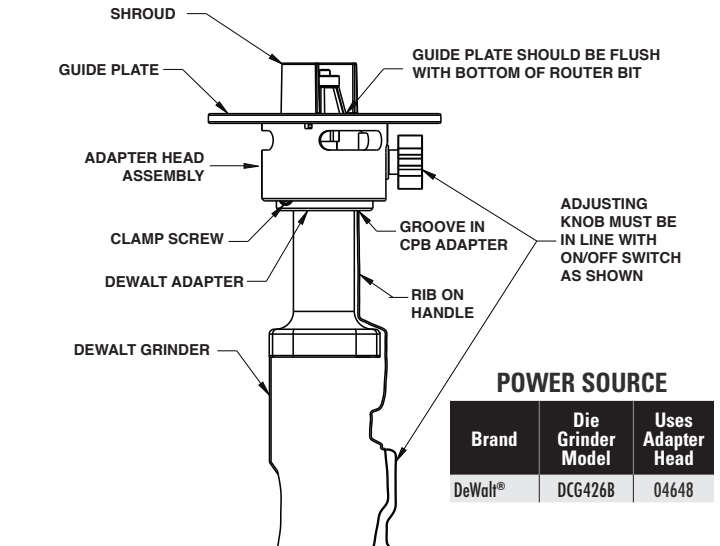
Fax: +1 814-455-1697 reedsales@reedmfgco.com

www.reedmfgco.com

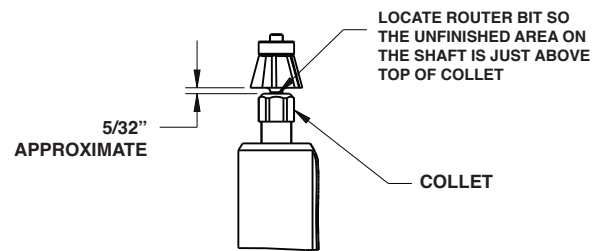
**#04648 CPBDADP and #04658 CPBDBT  
DEWALT® ASSEMBLY:**

1. Remove the battery from the grinder before any work is to be done on the grinder.
2. Remove wax protective coating on the new router bit. The router bit is not supplied with CPBDADP beveler adapter and must be purchased separately.
3. Place the router bit into the grinder collet and slide the bit down until it stops (bottoms out) and hand tighten the collet.
4. Next, raise the bit up until the unfinished shaft is just visible above the collet. Tighten the collet with the wrenches provided with the grinder.
5. **FIRMLY TIGHTEN THE COLLET** to prevent the router bit from coming loose while operating and causing damage or injury.
6. Place the beveler adapter head #04648 onto the grinder with the Adjusting Knob in line with the grinder's on/off switch as shown in the Assembly Diagram 1. The rib on the grinder handle must fit into the groove in the Adapter.
7. Loosen the Adjusting Knob and slide the Guide Plate to the lowest position. Push down on the Adapter Head with a rocking motion until the top of the guide plate is in line with the bottom of the Router Bit.
8. Slide the guide plate assembly up and tighten the clamp screw on the Adapter Head.
9. Adjust the guide plate to the desired length of bevel and tighten the Adjusting Knob.

**04648 ASSEMBLY DIAGRAM 1**



**04648 ASSEMBLY DIAGRAM 2**



04648 CPBDADP  
04671 CPDMADP29



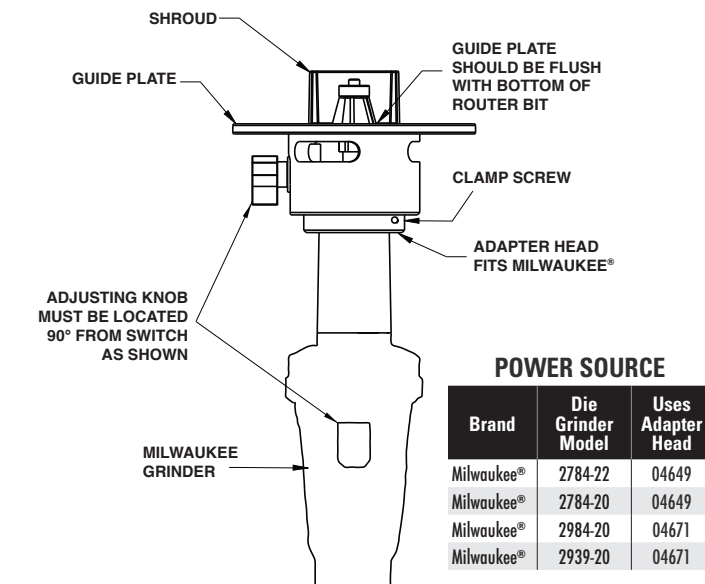
04648 -Adapter Plate on  
DeWalt® die grinder

DeWalt®, Milwaukee® and Bosch® are registered trademarks and are not associated with Reed Manufacturing.

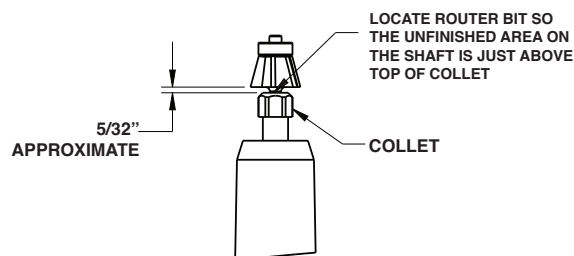
## #04649 CPBMADP and #04671 CPBMADP29 MILWAUKEE® ASSEMBLY:

1. Remove the battery from the grinder before any work is to be done on the grinder.
2. Remove wax protective coating on the new router bit. The router bit is not supplied with CPBMADP beveler adapter and must be purchased separately.
3. Place the router bit into the grinder collet and slide the bit down until it stops (bottoms out) and hand tighten the collet.
4. Next, raise the bit up until the unfinished shaft is just visible above the collet. Tighten the collet with the wrenches provided with the grinder.
5. **FIRMLY TIGHTEN THE COLLET** to prevent the router bit from coming loose while operating and causing damage or injury.
6. Place the beveler adapter head #04649 or #04671 onto the grinder locating the Adjusting Knob 90° to the left of the on/off switch as shown in the Assembly Diagram 1.
7. Loosen the Adjusting Knob and slide the Guide Plate to the lowest position. Push down on the Adapter Head with a rocking motion until the top of the guide plate is in line with the bottom of the Router Bit.
8. Slide the guide plate assembly up and tighten the clamp screw on the Adapter Head.
9. Adjust the guide plate to the desired length of bevel and tighten the Adjusting Knob.

## 04649, 04671 ASSEMBLY DIAGRAM 1



## 04649, 04671 ASSEMBLY DIAGRAM 2



## FOR INTERNATIONAL USE

To replace Metric collet with Imperial collet\*:

1. Remove collet nut and collet
2. Remove old collet from collet nut
3. Insert new collet into collet nut
4. Replace collet nut and collet onto tool



#04686 Collet

\*The metric collet supplied with some international Milwaukee die grinder models will not fit the REED RBIT1 and RBIT2. A change of collet is required; REED offers #04686 CPBMCOLLET. Refer to die grinder operator's manual for further instructions.

## INTERNAL BEVEL SHROUD:

An internal shroud #94644 is available for beveling 2" ID and larger pipe. This shroud can be used on all REED Bevel Boss models.

## REPLACE SHROUD:

To replace the shroud, remove the three screws from the guide plate with provided 1/8" hex wrench, replace shroud and reassemble.

**READ AND UNDERSTAND ALL SAFETY WARNINGS AND INSTRUCTIONS, INCLUDING DEWALT/ MILWAUKEE GRINDER AND BATTERY CHARGER WARNINGS AND INSTRUCTIONS.**

FAILURE TO FOLLOW ALL WARNINGS AND INSTRUCTION LISTED MAY RESULT IN ELECTRIC SHOCK, FIRE AND/OR SERIOUS PERSONAL INJURY.

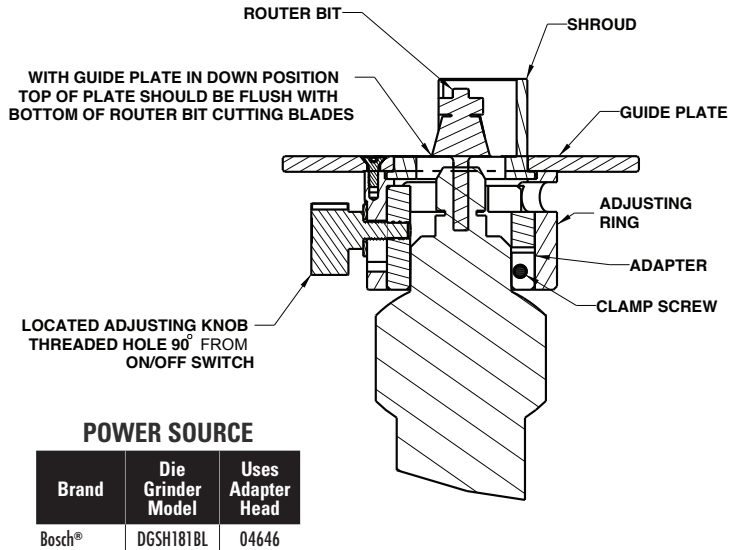


04649, 04671 - CPBDKIT  
Adapter Plate (Milwaukee)

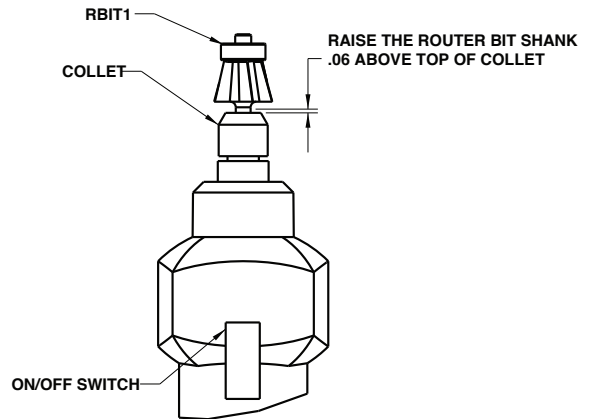
## #04646 CPBBADP BOSCH® ASSEMBLY:

1. Remove the battery from the grinder before any work is to be done on the grinder.
2. Remove wax protective coating on the new router bit. The router bit is not supplied with CPBBADP beveler adapter head and must be purchased separately.
3. Place the router bit into the grinder collet and slide the bit down until it stops (bottoms out) and hand tighten the collet.
4. Next, raise the bit up until the unfinished shaft is just visible above the collet. Tighten the collet with the wrenches provided with the grinder.
5. **FIRMLY TIGHTEN THE COLLET** to prevent the router bit from coming loose while operating and causing damage or injury.
6. Place the beveler adapter head #04646 onto the grinder locating the Adjusting Knob 90° to the left of the on/off switch as shown in the Assembly Diagram 1.
7. Loosen the Adjusting Knob and slide the Guide Plate to the lowest position. Push down on the Adapter Head with a rocking motion until the top of the guide plate is in line with the bottom of the Router Bit.
8. Slide the guide plate assembly up and tighten the clamp screw on the Adapter Head.
9. Adjust the guide plate to the desired length of bevel and tighten the Adjusting Knob.

### 04646 ASSEMBLY DIAGRAM 1



### 04646 ASSEMBLY DIAGRAM 2



### 04646 OPERATING DIAGRAM

