



PIPE TOOLS & VISES
SINCE 1896



**DRAINAGE
SOLUTIONS, INC**

(317) 346-4110

www.drainagesolutionsinc.com



Operating Instructions

Low Clearance Rotary Cutters

For cutting steel, ductile iron and cast iron pipe

| Catalog No. | Item Code | Steel in-nom. | Pipe Capacity | | actual O.D. mm | Cutter Wheel | Application | Length | | Weight | |
|-------------|-----------|---------------|-----------------------------|--|----------------|--------------|------------------------------------|--------|------|--------|------|
| | | | Cast & Ductile Iron in-nom. | | | | | in | mm | lbs | kg |
| LCRC4X | 03304 | 2 - 4 | - | | 60 - 125 | HX4 | Steel/Stainless Steel Sch. 40 & 80 | 19 | 483 | 12.3 | 5.6 |
| LCRC4I | 03306 | - | 2 - 4 | | 60 - 125 | HI4 | Cast/Ductile Iron | 19 | 483 | 12.3 | 5.6 |
| LCRC4S | 03307 | 2 - 4 | - | | 60 - 125 | HS4 | Steel/Stainless Steel Sch. 40 | 19 | 483 | 12.3 | 5.6 |
| LCRC8I | 03308 | - | 6 - 8 | | 159 - 246 | RCI8-30 | Cast/Ductile Iron | 58 | 1473 | 42.6 | 19.4 |
| LCRC8S | 03309 | 6 - 8 | - | | 159 - 246 | RCS8-36 | Steel/Stainless Steel Sch. 40 | 58 | 1473 | 42.6 | 19.4 |
| LCRC8X | 03311 | 6 - 8 | - | | 159 - 246 | RCX | Steel/Stainless Steel Sch. 40 & 80 | 58 | 1473 | 42.6 | 19.4 |
| LCRC12I | 03312 | - | 10 - 12 | | 266 - 358 | RCI8-30 | Cast/Ductile Iron | 61 | 1549 | 50 | 22.7 |
| LCRC12S | 03313 | 10 - 14 | - | | 266 - 358 | RCS8-36 | Steel/Stainless Steel Sch. 40 | 61 | 1549 | 50 | 22.7 |
| LCRC12X | 03314 | 10 - 14 | - | | 266 - 358 | RCX | Steel/Stainless Steel Sch. 40 & 80 | 61 | 1549 | 50 | 22.7 |
| LCRC16I | 03316 | - | 14 - 16 | | 368 - 462 | RCI8-30 | Cast/Ductile Iron | 66 | 1664 | 60 | 27.3 |
| LCRC16S | 03317 | 16 - 18 | - | | 368 - 462 | RCS8-36 | Steel/Stainless Steel Sch. 40 | 66 | 1664 | 60 | 27.3 |
| LCRC16X | 03318 | 16 - 18 | - | | 368 - 462 | RCX | Steel/Stainless Steel Sch. 40 & 80 | 66 | 1664 | 60 | 27.3 |

Operating Instructions

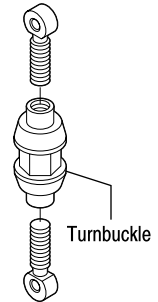
First, inspect the wheels to insure they suit the type of pipe that is to be cut. The cutter wheel chart (Fig. 1) identifies the proper wheel for each application.

Fig. 1

CUTTER WHEEL CHART FOR LOW CLEARANCE ROTARY CUTTERS

| Item Code | Std. Cat. No. | Std. Pkg. | Reed Cutter | Blade Exposure | | Application |
|-----------|---------------|-----------|---|----------------|------|---|
| | | | | Inches | mm | |
| 03504 | HS4 | 4 | LCRC4; H4 | 0.320 | 8.1 | Steel; Stainless Steel |
| 03505 | HSI4 | 4 | LCRC4; H4 | 0.275 | 7.0 | Steel; Stainless Steel; Cast Iron; Ductile Iron |
| 03512 | HX4 | 4 | LCRC4; H4 | 0.383 | 9.7 | Steel; Stainless Steel; Schd 80 |
| 03530 | RCS8-36 | 4 | LCRC8; LCRC12; LCRC16; RC20; RC24; RC30; RC36 | 0.635 | 16.1 | Steel; Stainless Steel |
| 03535 | RCI8-30 | 4 | LCRC8; LCRC12; LCRC16; RC20; RC24; RC30; RC36 | 0.500 | 12.7 | Cast Iron; Ductile Iron (manual) |
| 03545 | RCDX | 4 | LCRC8; LCRC12; LCRC16; RC20; RC24; RC30; RC36 | 0.531 | 13.5 | Heavy Cast Iron; Ductile Iron (power) |
| 03550 | RCX | 4 | LCRC8; LCRC12; LCRC16; RC20; RC24; RC30; RC36 | 0.800 | 20.3 | Heavy Wall Steel; Stainless Steel |

Make sure bolted rod ends are in proper location for size of pipe to be cut. Turnbuckles should be unscrewed equally until the rod end eye center is about 2 1/4" (57 mm) from the end of the turnbuckles. Disconnect a release pin and fit cutter over pipe to be cut. (You may have to disconnect both pins if clearance around the pipe is minimal.) Connect release pin through yoke section and rod end in proper location and place the spring loaded guide section of the cutter on top of the pipe. Hand tighten both turnbuckles evenly until all 4 wheels touch the pipe. Tighten the turnbuckles every 1/2 revolution of the cutter. The turnbuckles may also be used to pull the cutter around the pipe.



NOTE: Tighten the turnbuckles as tight as possible while still being able to pull the cutter around the pipe. (Handle leverage allows easy tightening - 1/2 revolution of the turnbuckle should provide sufficient tension.)

USE LUBRICATING OIL: It will take less effort and prolong the life of the wheels and wheel pins.

BADLY CRUSTED AND RUST SCALED PIPE: Remove the rust and scale from the area to be cut with a Reed Descaler (Fig. 2). This will help save cutter wheels and cutting time; and helps square the cutter on the pipe to insure tracking.

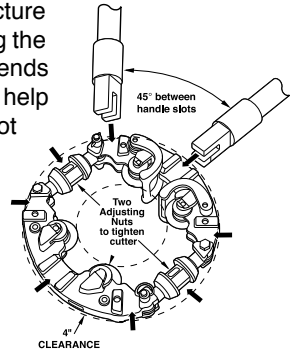
Fig. 2

PIPE DESCALERS

| Cat. No. | Item Code | Pipe Capacity | | Length | |
|----------|-----------|---------------|-------------|--------|---------|
| DS12 | 08000 | 3 - 12 in | 70 - 300 mm | 32 in | 810 mm |
| DS36 | 08006 | 3 - 36 in | 70 - 910 mm | 44 in | 1110 mm |
| DS12B | 08008 | 3 - 12 in | 70 - 300 mm | 45 in | 1143 mm |

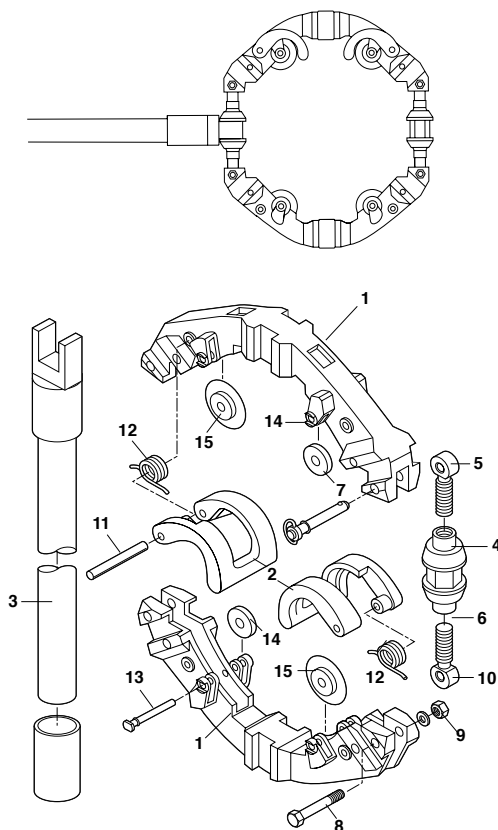
HELPFUL HINTS: While cast and ductile iron pipe will fracture along the cut line after penetrating part way, continue feeding the wheels in to make sure the cut is completed. Ductile iron tends to work harden. Continuous feeding and maximum pressure help prevent this. In the event that cutter wheels for iron are not available, cutter wheels for steel pipe can be substituted for use on ductile iron pipe. Be advised that steel cutter wheels may wear faster

CAUTION: Always wear proper eye protection when using this or any hand tool

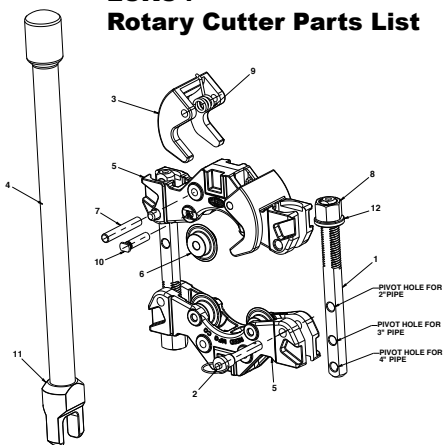


Low Clearance Rotary Cutters

Replacement Parts



LCRC4 Rotary Cutter Parts List



| Ref. No. | Description | Item Code | Qty. |
|----------|--------------------|-----------|------|
| 1 | Feed Screw | 96293 | 2 |
| 2 | Quick Release Pin | 97545 | 2 |
| 3 | HS4 Guide | 93046 | 2 |
| 4 | Handle | 97218 | 1 |
| 5 | Machined Yoke | 96292 | 2 |
| 6 | HS4 Cutter Wheel | 03504 | 4 |
| 7 | Guide Pin | 30030 | 2 |
| 8 | Feed Nut | 96294 | 2 |
| 9 | Guide Spring | 40035 | 2 |
| 10 | HS4 Wheel Pin | 93310 | 4 |
| 11 | Handle End | 96291 | 1 |
| 12 | CV4 Bearing Washer | 92061 | 2 |

Parts List

| Ref. No. | Description | LCRC8 | | LCRC12 | | LCRC16 | |
|----------|---|-----------|-----------|-----------|-----------|-----------|-----------|
| | | Item Code | Qty. Used | Item Code | Qty. Used | Item Code | Qty. Used |
| 1 | Yoke Sabot | 93174 | 2 | 93175 | 2 | 93171 | 2 |
| 2 | Guide Guide | 93165 | 2 | 93166 | 2 | 93166 | 2 |
| 3 | Handle Assembly Manivelle | 93176 | 1 | 93176 | 1 | 93176 | 1 |
| 4 | Turnbuckle Boucle de serrage | 93169 | 2 | 93169 | 2 | 93169 | 2 |
| 5 | Rod End Right Hand Tige filetée (pas à droite) | 93172 | 2 | 93172 | 2 | 93172 | 2 |
| 6 | Rod End Left Hand Tige filetée (pas à gauche) | 93173 | 2 | 93173 | 2 | 93173 | 2 |
| 7 | Release Pin Cheville de dégagement | 40147 | 2 | 40147 | 2 | 40147 | 2 |
| 8 | Cap Screw Boulon fileté | 30091 | 3 | 30091 | 3 | 30091 | 3 |
| 9 | Lock Washer Rondelle d'arrêt | 30093 | 2 | 30093 | 2 | 30093 | 2 |
| 10 | Hex Nut Écrou hexagonal | 30150 | 2 | 30150 | 2 | 30150 | 2 |
| 11 | Guide Pin Cheville de guidage | 30090 | 2 | 30090 | 2 | 30090 | 2 |
| 12 | Guide Spring Ressort de guidage | 40321 | 2 | 40152 | 2 | 40343 | 2 |
| 13 | Wheel Pin Assembly Cheville de molette complète | 93200 | 4 | 93200 | 4 | 93200 | 4 |
| 14 | Roller Disque | 93220 | 8 | 93220 | 8 | 93220 | 8 |
| 15 | Cutter Wheel Molette | | | | | | |

See cutter wheel reference chart in catalog or price list.

Voire le tableau de référence des molettes dans le catalogue ou la liste de prix.



REED Warranty

REED will repair or replace tools with any defects due to faulty materials or workmanship for one (1) year or five (5) years from the date of purchase, as applicable. This warranty does not cover part failure due to tool abuse, misuse, or damage caused where repairs or modifications have been made or attempted by non REED authorized repair technicians. This warranty applies only to REED tools and does not apply to accessories. This warranty applies exclusively to the original purchaser.

One (1) year warranty: Power units for pneumatic, electric, hydraulic and battery-powered tools have a one year warranty. This includes, but is not limited to REED pumps, universal pipe cutter motors, power drives, power bevel tools, threading machines, cordless batteries and chargers.

Five (5) year warranty: Any REED tool not specified under the one (1) year warranty above is warranted under the REED five (5) year warranty.

NO PARTY IS AUTHORIZED TO EXTEND ANY OTHER WARRANTY. NO WARRANTY FOR MERCHANTABILITY OR FITNESS FOR A PARTICULAR PURPOSE SHALL APPLY.

No warranty claims will be allowed unless the product in question is received freight prepaid at the REED factory. All warranty claims are limited to repair or replacement, at the option of REED, at no charge to the customer. REED is not liable for any damage of any sort, including incidental and consequential damages. This warranty gives you specific legal rights, and you may also have other rights which vary by state, province or country.



DRAINAGE
SOLUTIONS, INC

(317) 346-4110

www.drainagesolutionsinc.com



PIPE TOOLS & VISES
SINCE 1896

REED MANUFACTURING

1425 WEST 8TH ST. ERIE, PA 16502 USA

PHONE: 800-666-3691 OR +1-814-452-3691 reedsales@reedmfgco.com

www.reedmfgco.com

0720-50329