



PIPE TOOLS & VISES
SINCE 1896

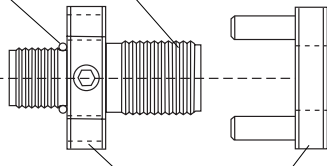
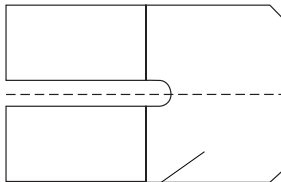
Instructions for Using PL1438 1 1/2" & PL1750 2" PVC Shell Cutters with Reed Hole Saw Adapter on the DM2000

Hole Saw Spacer (#113 "O" Ring .56"ID x .75"OD x 3/32)
installed between saw and arbor

This end screws into the threaded end
of the machine boring bar.

Note:

1. Do not use pilot when drilling PVC pipe.
2. Do not overfeed shell cutters into PVC pipe.
3. For better wear, use tapping compound (#98425) on the cutting tips and the outside of the shell cutter.



PVC Shell Cutter - Screw onto arbor body to the
o-ring and line up pin holes for the driver pins.

Arbor Body

Driver



(317) 346-4110 www.drainagesolutionsinc.com

#50430