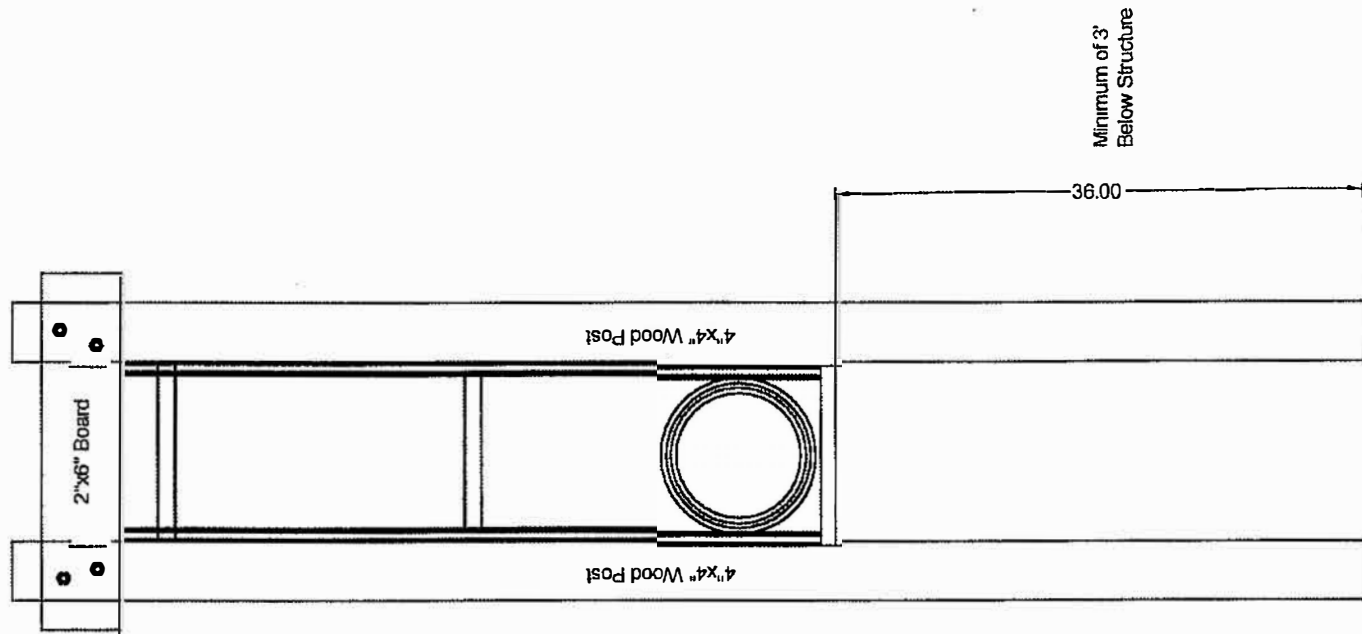
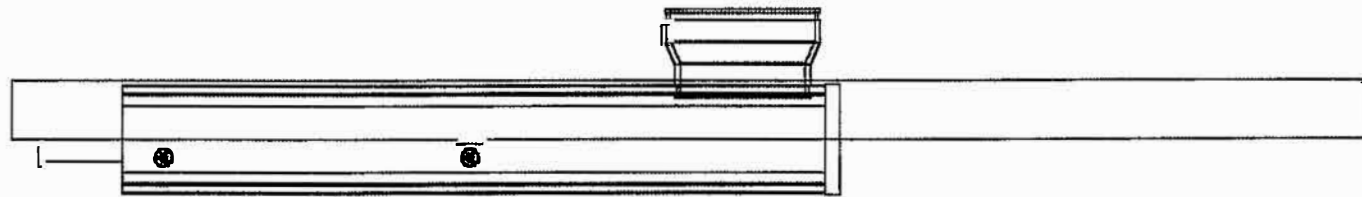
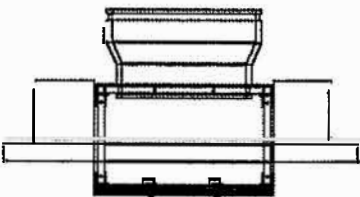


PART NO. REV. CO. AGRI DRAIN CORP. MATERIAL:

| REVISIONS | | | |
|-----------|-------------|------|----|
| REV | DESCRIPTION | DATE | BY |



Holes dug for post should be filled with concrete.



DRAINAGE SOLUTIONS, INC

(317) 346-4110
www.drainagesolutionsinc.com

UNLESS OTHERWISE SPECIFIED
ALL DIMENSIONS ARE IN INCHES.
X ±.06
.XX ±.03
.XXX ±.010
ANGLES ±2°
BREAK ALL SHARP CORNERS.

ALL INFORMATION CONTAINED IN THIS DOCUMENT IS PROPRIETARY TO AGRI DRAIN CORP. DUPLICATION OR TRANSMITTAL OF THIS DOCUMENT IS STRICTLY PROHIBITED WITHOUT THE WRITTEN CONSENT OF AGRI DRAIN CORP.

| ITEM | QTY | ITEM DESCRIPTION | PART NO. |
|------|-----|------------------|----------|
|------|-----|------------------|----------|

Agri Drain CORPORATION

America's Most Complete Supplier of Water Management Products.

P.O. Box 458 - 1482 340th St. - Adair, IA 50002 - Ph: 1-800-232-4742 - Fax 1-800-282-3353 - www.agridrain.com

TITLE

INLET STRUCTURE BRACING

| | | | |
|---------------|------------------|----------|------|
| DATE: 08DEC08 | DRAWN BY: T.HUSS | PART NO. | REV. |
|---------------|------------------|----------|------|