

# BASIC INSTALLATION OF ADAPT-A-FLEX FITTINGS.

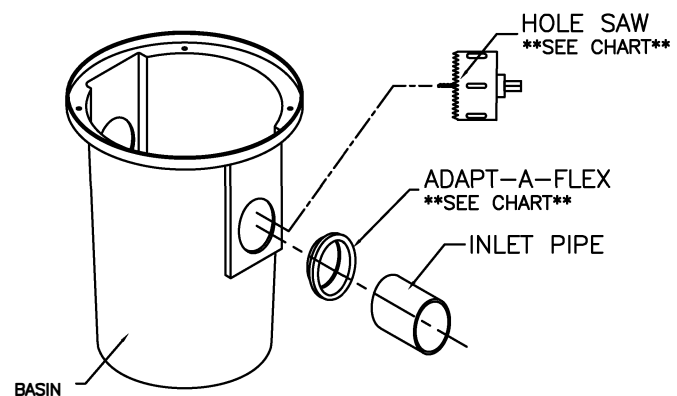
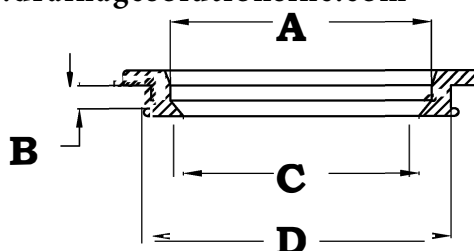
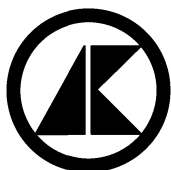
Adapt-A-Flex Fittings						
Part #	Size	A	B	C	D	Saw Size
AKP10000	3/8"	.659	.375	.467	1.046	1"
AKP10010	1/2"	.853	.488	.662	1.325	1-1/4"
AKP10020	3/4"	1.044	.495	.847	1.324	1-1/4"
AKP10030	1"	1.300	.220	1.050	1.780	1-3/4"
AKP10035	1 1/4" NS	1.637	.506	1.385	2.078	2"
AKP10040	1-1/4" OS	1.618	.507	1.361	2.971	3"
AKP10050	1-1/2" NS	1.898	.503	1.589	2.566	2 1/2"
AKP10060	1-1/2" OS	1.824	.502	1.554	2.950	3"
AKP10070	2"	2.303	.513	2.040	2.980	3"
AKP10080	3"	3.491	.512	3.195	4.065	3 7/8"
AKP10090	3" X 2"	2.288	.513	2.011	4.055	3 7/8"
AKP10100	4" (SDR35)	4.292	.508	3.837	4.979	4 7/8"
AKP10110	4" (SDR40)	4.435	.515	4.192	5.035	4 7/8"
AKP10120	6" (SDR35)	6.275	.512	5.500	7.063	7"
AKP10130	6" (SDR40)	6.688	.514	6.075	7.013	7"
AKP10570	4" JONESTITE	4.625	1.438	4.000	5.125	4 7/8"

- 1) SELECT PROPER HOLE SAW FROM CHART ABOVE AND CUT HOLE AT DESIRED LOCATION IN PART.
- 2) INSERT ADAPT-A-FLEX INTO THE HOLE, MAKING SURE THAT IT IS FLUSH AGAINST PART.
- 3) SLIGHTLY BEVEL ONE END OF INLET PIPE, MAKING IT EASIER TO PUSH THROUGH ADAPT-A-FLEX.
- 4) APPLY SOAPY WATER TO ADAPT-A-FLEX AT INLET INSERTION POINT.
- 5) APPLY SOAPY WATER ON THE BEVELED END OF INLET PIPE.
- 6) PUSH INLET PIPE THROUGH ADAPT-A-FLEX.



(317) 346-4110  
www.drainagesolutionsinc.com

**DRAINAGE SOLUTIONS, INC**



THIS DRAWING IS THE SOLE PROPERTY OF AK MANUFACTURING LLC