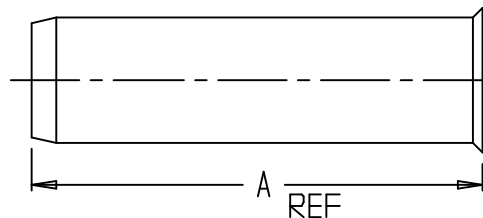
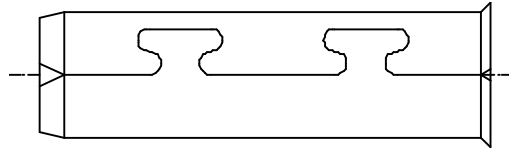


# SUBMITTAL DATA SHEET

Service Fitting – 6133T

CTS Insert Stiffener - Stainless Steel



MODEL	SIZE	A
6133T	3/4	2 3/8
6133T	1	2 3/8
6133T	1 1/4	2 3/8
6133T	1 1/2	2 3/8
6133T	2	2 3/8

## SUBMITTAL INFORMATION

- 304 Series Stainless Steel
- Certified to NSF/ANSI/CAN 61
- Insert stiffeners required on all flexible plastic connections.
- For use on:
  - Polyethylene – ASTM D2737 SDR 9 tube size
  - Pex Tubing – ASTM F876 SDR 9 CSA B137.5
  - Polybutylene – ASTM D2666 SDR 9 tube size Class 250



**A.Y. McDonald Mfg. CO.**  
 P.O. Box 508  
 Dubuque, IA 52004-508

**Toll Free: 1-800-292-2737**

**Fax: 1-800-832-9296**

**Hours: 7:00 a.m. – 5:00 p.m., CST**

[sales@aymcdonald.com](mailto:sales@aymcdonald.com)

[www.aymcdonald.com](http://www.aymcdonald.com)

A.Y. McDonald considers the information on this assembly drawing correct when published. Item and option availability, including specifications, are subject to change without notice.

**Submitted by:**



(317) 346-4110  
[www.drainagesolutionsinc.com](http://www.drainagesolutionsinc.com)