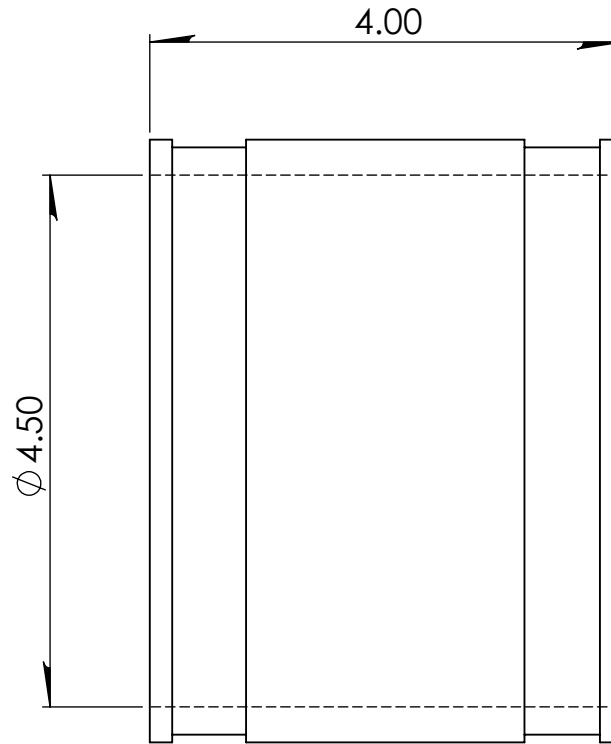
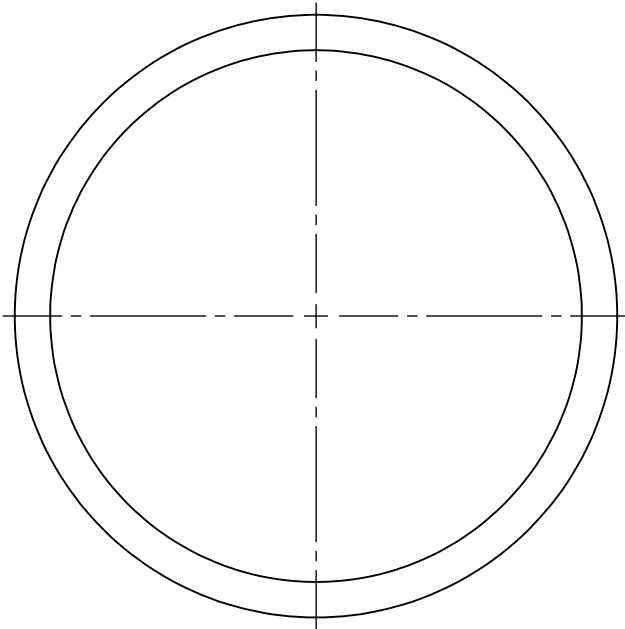




**DRAINAGE
SOLUTIONS, INC**

(317) 346-4110

www.drainagesolutionsinc.com



NOTE:

PROPRIETARY AND CONFIDENTIAL THE INFORMATION CONTAINED IN THIS DRAWING IS THE SOLE PROPERTY OF FERNCO, INC. ANY REPRODUCTION IN PART OR AS A WHOLE WITHOUT THE WRITTEN PERMISSION OF FERNCO, INC. IS PROHIBITED.	TOLERANCES: FRACTIONAL $\pm 1/4"$.XX = $\pm .06$ ANG. = $\pm 3^\circ$ UNLESS OTHERWISE SPECIFIED	MATERIAL	PVC	CLAMPS USED	300 SERIES STAINLESS	UNITS:	SIZE:	AUTHOR:	SCALE:
		PART WEIGHT		INSTALLATION TORQUE	60 IN · LBS	INCHES	A	ELI MILLER	NOT TO SCALE
		BOX QUANTITY		MIN/MAX TEMP.	-30/140 °F	3RD ANGLE PROJECTION	CHECKER:	DATE:	
		PRESSURE TESTED		ASTM	C1173 / D5926	DO NOT SCALE DRAWING		10/4/2018	SHEET 1 OF 1