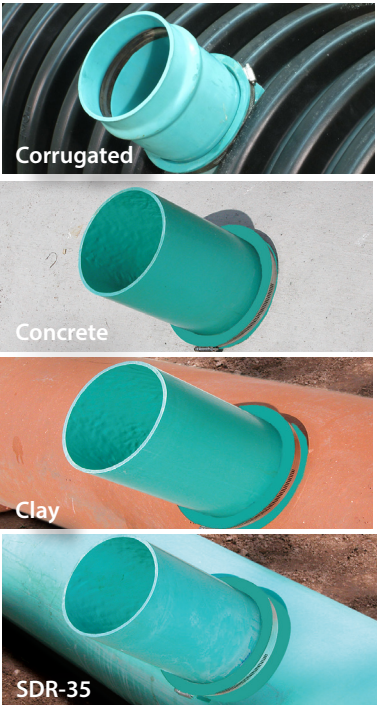




If you can core through it, QwikSeal can connect to it.



Benefits

- Meets ASTM C 923
- When tested in concrete manholes
 - Creates water-tight, compression seal up to 10 PSI
 - Withstands up to 7° of deflection
- Easy color identification - gray Sch 40 - green SDR-26 & 35
- Independent of host pipe size, type or material
- Reduced complexity, many solutions with one QwikSeal
- Less inventory and more turns

NOTE: Corrugated Applications

- QS-4 and QS-4S40: 8" to 24" pipe diameter
- QS-6 and QS-6S40: 10" to 24" pipe diameter
- QS-8: 15" to 24" pipe diameter

Fernco QwikSeal

Part Number	Pipe Inlet	Host Pipe Size Application
QS-4	4" SDR	8" diameter and larger pipe
QS-4S40	4" SCH-40	8" diameter and larger pipe
QS-6	6" SDR-35	10" diameter and larger pipe
QS-6S40	6" SCH-40	10" diameter and larger pipe
QS-8	8" SDR-35	15" diameter and larger pipe



Fernco Hole Saws

Part Number	Description
QS-5x4HS	5" OD x 4" Deep Hole Saw with Arbor
QS-7x4HS	7" OD x 4" Deep Hole Saw with Arbor
QS-9x4HS	9" OD x 4" Deep Hole Saw with Arbor
QS-SAW5S	5" OD x 4" Deep Hole Saw
QS-SAW7S	7" OD x 4" Deep Hole Saw
QS-SAW9S	9" OD x 4" Deep Hole Saw
QS-ARBOR-S	3/8" x 6" Drill with 1/2" Arbor
QS-ADAPTER	1 1/4" x 3/4" Coring Machine Adapter



- Economical, lighter and easier to handle
- General purpose tempered steel hole saw used for coring all types of plastic pipe materials
- Core through all thick walled plastic pipe including corrugated
- DO NOT use with steel, concrete or clay
- QS-ADAPTER adapts all hole saws to stationary and hand held drilling machines with 1/4" - 7 thread

Fernco Coring Bits

Part Number	Description
QS-5x14CB	5" OD x 14" Length Abrasive Coring Bit
QS-7x14CB	7" OD x 14" Length Abrasive Coring Bit
QS-9x14CB	9" OD x 14" Length Abrasive Coring Bit



- Diamond tipped abrasive bit used for coring reinforced and non-reinforced concrete and clay pipe materials
- Use with stationary drilling machines
- Use with water as coolant - DO NOT USE DRY
- Adapts to 1/4" - 7 thread