

# Infiltrator Pipe Adapter Ring Assembly Instructions for EZsnap Compatible IM-Series Tanks



## Required Tools and Materials for Riser Pipe Installation

- Screw gun
- Caulk gun and ISI-1500 Sealant
- Marker or marking pencil
- Brush
- Rag
- #14 x 2" stainless steel screws (supplied with SNAPPAR)
- #14 x 2" stainless steel lag bolts (for lid)
- (4) #12 x 1/2" stainless steel screws (not provided)
- 7/16" Hex nut driver screw gun bit
- #3 Square head Robertson driver bit, 6-inch length
- #2 Phillips driver bit, 6-inch length
- 3/8" Hex nut driver screw gun bit
- Infiltrator Pipe Adapter Ring (SNAPPAR-2400)

## 24-inch (600-mm) IPEX, Ultra-Rib™ PVC Pipe

**Note:** 24-inch (600-mm) IPEX pipe must be installed using the Infiltrator Pipe Adapter Ring (SNAPPAR-2400).

1. Install riser assembly prior to backfilling tank.
2. Cut IPEX pipe along an inner corrugation to allow lid to fit properly. Cut should be smooth and even.
3. Apply 2 continuous 3/8" beads of ISI-1500 Adhesive Sealant to the smaller of the two standing ribs closest to the screw pilot holes on the top surface of the IM-Tank manhole opening. Add an extra dab of sealant in each screw hole. Sealant thickness must fill gap beneath Infiltrator Pipe Adapter Ring.



4. Align the Pipe Adapter Ring with the IM-Tank opening by lining up the arrows on the Pipe Adapter Ring with the arrow on the tank inlet or outlet. The ring will seat on the tank tightly when properly aligned. Center and press to create an even distribution of the sealant.

5. Fasten Infiltrator Pipe Adapter Ring to the IM-Tank manhole opening using ten #14 x 2-inch stainless steel screws. Tighten in star pattern. Repeat star pattern at least twice, without over tightening screws.

6. Mark (4) evenly spread locations on the inside of the Infiltrator Pipe Adapter Ring for pilot holes to accept screws. The pilot holes should be at a height half way up the interior

flange of the Infiltrator Pipe Adapter Ring.

7. Drill (4) 1/8-inch (3.5-mm) pilot holes at marked locations on the Infiltrator Pipe Adapter Ring.
8. Apply (1) bead of ISI-1500 Adhesive Sealant to the first taper on the Infiltrator Pipe Adapter.



9. Place the IPEX pipe over the Infiltrator Pipe Adapter Ring until it is seated at the base of the flange.

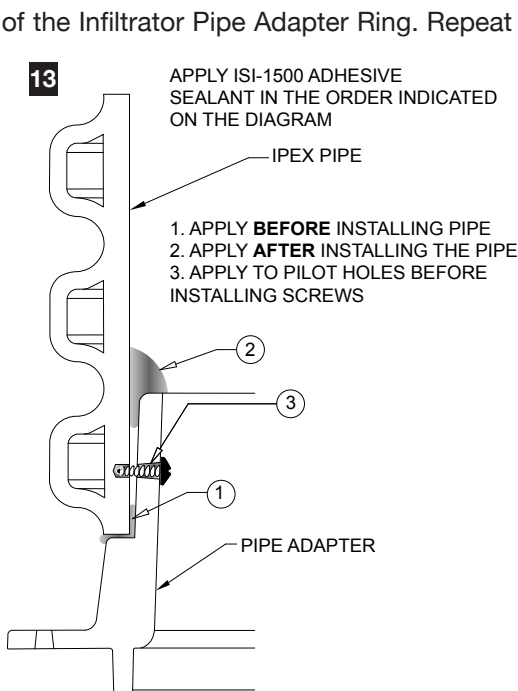
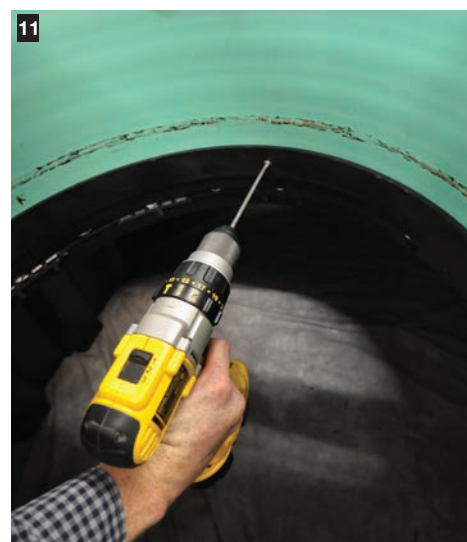
10. Insert ISI-1500 Adhesive Sealant into the (4) pre-drilled pilot holes.

11. Fasten IPEX pipe to Infiltrator Pipe Adapter Ring using (4) #12 x 1/2-inch stainless steel screws from the inside of pipe.

12. Tighten screws in a "star" pattern, tightening screws on opposite sides of the Infiltrator Pipe Adapter Ring. Repeat the star pattern at least twice, without over tightening screws.

13. Apply a generous bead of sealant into the groove at the top of the pipe adapter and then smear the sealant into the groove between the pipe and Infiltrator Pipe Adapter Ring.

14. Use the Infiltrator IM-Series septic tank lid, or



equivalent product as a lid for the riser pipe. The lid will require the installation of the factory supplied adhesive backed gasket to the bottom side of the lid to ensure a snug fit. Set and center the lid onto the riser pipe and fasten using the factory supplied (10) #14 x 2-inch



stainless steel lag bolts with washers. Pre-drill 1/8" (3.5-mm) pilot holes on the inner set of templated locations on the lid.

**Note:** when using the Infiltrator lid, apply the factory supplied adhesive back gasket to the bottom side of the lid to ensure a snug fit.

**15.** Backfill tank in accordance with Infiltrator's tank installation instructions.

**16.** Following tank backfilling, visually examine the riser to Infiltrator Pipe Adapter Ring connection for damage resulting from backfill placement. Repair or replace if damaged. Allow 24 hours sealant cure-time before testing or putting into service.

## 24-inch (600-mm) HDPE Pipe

**Note:** The 24-inch (600-mm) HDPE pipe must be installed using the Infiltrator Pipe Adapter Ring (SNAPPAR-2400).

**1.** Install riser assembly prior to backfilling tank.  
**2.** Cut HDPE pipe along an inner corrugation to allow lid to fit properly. Cut should be smooth and even.

**3.** Apply 1 continuous 3/8" beads of ISI-1500 Adhesive Sealant to the smaller of the two standing ribs closest to the screw pilot holes on the top surface of the IM-Tank manhole opening. Add an extra dab of sealant in each screw hole. Sealant thickness must fill gap beneath Infiltrator Pipe Adapter Ring.

**4.** Align the Pipe Adapter Ring with the IM-Tank opening by lining up the arrows on the Pipe Adapter Ring with the arrow on the tank inlet or outlet. The ring will seat on the

tank tightly when properly aligned. Center and press to create an even distribution of the sealant.

**5.** Fasten Infiltrator Pipe Adapter Ring the IM-Tank manhole opening using ten #14 x 2-inch stainless steel screws. Tighten in star pattern. Repeat star pattern at least twice, without over tightening screws.

**6.** Mark (4) evenly spread locations on the Infiltrator Pipe Adapter Ring for pilot holes to accept screws. The pilot holes should be at a height half way up the interior flange of the Infiltrator Pipe Adapter Ring.

**7.** Drill (4) 1/8-inch (3.5-mm) pilot holes at marked locations on the Infiltrator Pipe Adapter Ring.

**8.** Center the HDPE pipe over the Infiltrator Pipe Adapter Ring.

**9.** Fasten HDPE pipe to Infiltrator Pipe Adapter Ring using four #12 x 1 1/4-inch (5.5 mm x 31 mm) stainless steel screws from inside the pipe.

**10.** Tighten screws in a "star" pattern, tightening screws on opposite sides of the Infiltrator Pipe Adapter Ring. Repeat the star pattern at least twice, without over tightening screws.

**11.** Apply ISI-1500 Adhesive Sealant in the space between the pipe and Infiltrator Pipe Adapter Ring to seal the gap between the pipe and adapter ring.

**12.** Use the Infiltrator IM-Series septic tank lid, or equivalent product as a lid for the riser pipe. The lid will require the installation of the factory supplied adhesive backed gasket to the bottom side of the lid to ensure a snug fit. Set and center the lid onto the riser pipe and fasten using the factory supplied (10) #14 x 2-inch stainless steel lag bolts. Pre-drill 1/8" (3.5-mm) pilot holes on the inner set of templated locations on the lid.

**Note:** when using the Infiltrator lid, apply the factory supplied adhesive back gasket to the bottom side of the lid to ensure a snug fit)

**13.** Backfill tank in accordance with Infiltrator's tank installation instructions.

**14.** Following tank backfilling, visually examine the riser to Infiltrator Pipe Adapter Ring connection for damage resulting from backfill placement. Repair or replace if damaged. Allow 24 hours sealant cure-time before testing or putting into service.

## Backfill Tank and Risers

Backfill tank and risers in lifts properly supporting all sides of the risers as you move up.

**Note:** Always install and secure lids prior to backfill.



**INFILTRATOR**  
water technologies



**DRAINAGE**  
**SOLUTIONS, INC**

(317) 346-4110

www.drainagesolutionsinc.com

U.S. Patents: 4,759,661; 5,017,041; 5,156,488; 5,336,017; 5,401,116; 5,401,459; 5,511,903; 5,716,163; 5,588,778; 5,839,844 Canadian Patents: 1,329,959; 2,004,564 Other patents pending. Infiltrator, Equalizer, Quick4, and SideWinder are registered trademarks of Infiltrator Water Technologies. Infiltrator is a registered trademark in France. Infiltrator Water Technologies is a registered trademark in Mexico. Contour, MicroLeaching, PolyTuff, ChamberSpacer, MultiPort, PosiLock, QuickCut, QuickPlay, SnapLock and StraightLock are trademarks of Infiltrator Water Technologies. PolyLok is a trademark of PolyLok, Inc. TUF-TITE is a registered trademark of TUF-TITE, INC. Ultra-Rib is a trademark of IPEX Inc.

© 2019 Infiltrator Water Technologies, LLC. All rights reserved. Printed in U.S.A.

PAR24 0819

Contact Infiltrator Water Technologies' Technical Services Department for assistance at 1-800-221-4436