

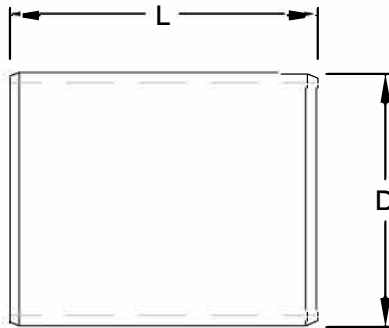
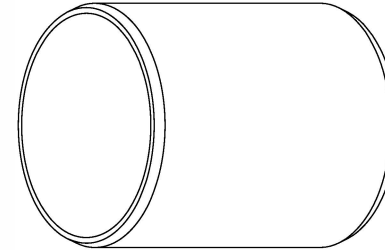
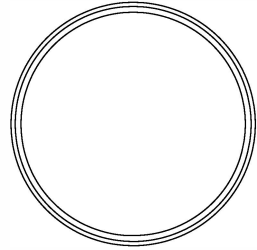


**DRAINAGE SOLUTIONS, INC**

(317) 346-4110

www.drainagesolutionsinc.com

REVISIONS			
REV	DESCRIPTION	DATE	APPROVED



Nominal Size	Part Number	L	D
4	15041	5.00	3.95
6	15042	7.00	5.90
8	15043	8.00	7.85

Dimensions are approximate due to various factors affecting production. Dimensions are subject to change without notice due to design or production modifications. Unless otherwise specified, socket bottom to socket bottom dimensions are to be  $\pm 1/2"$ . Overall length dimensions are to be  $\pm 1"$ . All fitting angles are to be  $\pm 1$  degree. Outside dimensions are to be  $\pm 1/4"$ .

This print discloses subject matter in which Macon Plastics has proprietary rights. This drawing was originated by and is the exclusive property of Macon Plastics. It is furnished for recipient's information only and is not an authorization or license to make this construction or furnish this information to others.



DRAWN BY MB

APPROVED BY JW

**Macon Plastics**  
P.O. Box 6401 Macon, GA 31208 888.782.2722

**3034 SDR 35**  
**Internal Coupling Information**

SIZE	DWG NO.	REV
A	SSWR-S-INTERNALCPLG-15-001	

SCALE	DATE	SHEET
NTS	09/03/2015	1 OF 1